



## Influence ability of intelligence to support naval operations in the waters of Java Sea

Rudy Sokabla<sup>1</sup>, Asep Wawan<sup>2</sup>

### ARTICLE INFO

#### Article history:

Received 11 October 2019;  
in revised form 12 January 2020;  
accepted 13 February 2020.

#### Keywords:

Personnel capability, Intelligence synergy of supporting, Intelligence work equipment.

### ABSTRACT

Java Island which consists of various Provinces has vast waters, especially in the East Java region, which is one of the busy sea traffic lanes. By seeing this condition, it is very vulnerable to violations and threats from both inside and outside parties. Therefore there is a need for the role of the Indonesian Navy that has the task of maintaining the sovereignty of the territorial waters of the Indonesian Sea, especially in the field of intelligence as eyes and ears in providing information to top leaders. The Main Naval Base Intelligence in the East Java region has a great influence on the sea operations that are often carried out, with the success of the intelligence role then operations at sea can also run with maximum results. This is what makes the attention of researchers to determine the effect of professional intelligence capabilities in supporting marine operations in the Indonesian Naval Base in East Java. According to researchers, professional intelligence must be based on extensive knowledge and also have task experience. In addition to increasing the speed of information and updating there is a need for synergy between intelligence in internal and external units, especially in the maritime field in supervising and securing waters in the East Java Sea and the support of modern intelligence equipment by following increasingly rapid technological developments. These three categories are the main topics in the research discussion to make professional and high quality intelligence, especially in the intelligence of the Indonesian Main Naval Base, Surabaya. The results of the study after conducting interviews with several informants were then processed using the Nvivo12 plus method and triangulated, so that conclusions and suggestions can be drawn as consideration for the leadership of the Indonesian Navy.

© SEECMAR | All rights reserved

### 1. Preliminary.

#### 1.1. Background.

Indonesia is a country that has thousands of islands, tribes and also diverse languages and has abundant marine resource potential, Indonesia needs to protect its territorial waters from any threats that can disrupt the stability of the country's security. The Indonesian arm force plays the role of a state instrument in the field of defense which in carrying out its duties based on state policies and political decisions, to safeguard the sovereignty of the territorial waters of the Indonesian state is the main task of the Indonesian Navy's National Army. One of

the waters that are busy with the flow of sea traffic is in the waters of Java Sea so that it can cause prone accidents at sea and offenses that are prone to occur such as illegal fishing, illegal migrants, illegal logging, illegal mining and others. The role of the Indonesian Navy's Fleet in East Java has the duty to secure its work area, and is assisted by the Indonesian Naval's Main Base in Surabaya. The Naval's Base in Surabaya in securing its work area has several work unit fields, one of which is from the intelligence field. In the title, keywords, sections, subsections and sub-subsections, all words which are not prepositions and/or articles will begin in uppercase. Abbreviations should not be used in these cases or in the abstract, unless they are so widely used that they do not need explanation.

Understanding intelligence as knowledge is information material that has been processed through processing so that it is meaningful as knowledge for consideration in preparing plans,

<sup>1</sup>Faculty of Bioscience Engineering. Department of Green Chemistry and Technology. Universiteit Gent. AsepWawan.Permana@UGent.be.

formulating policies and making decisions and actions to be implemented. The role of intelligence in the Indonesian main naval base is very necessary because it becomes the eyes and ears before carrying out operations and patrols at sea so that the function of early detection and prevention of vulnerability and violations at sea in Java can be overcome. Supervision and security of the Java sea area will be maximal if it has intelligence personnel who have the ability of qualified human resources with extensive knowledge and experience in duty. Intelligence education and training is very influential in improving the quality of intelligence personnel. The role of intelligence in gathering data or getting information will be better if the news obtained is obtained from many sources which will later be analyzed and become a quality intelligence product.

Intelligence personnel can not only work alone but can also work in groups or teams so that the role of synergy between the intelligence community with other units especially those related to the maritime field also influences in carrying out regional security, let alone confronted with the vast territorial waters of the Java sea. So that events or information obtained can be updated and the implementation of early detection and prevention can also be implemented. The role of synergy with maritime areas such as fisheries, Customs, Immigration, Marine Police and several other agencies, is very important to obtain information data that occurs at sea to support operations in the Indonesian Main Naval Base area of Surabaya.

In addition to having extensive knowledge, intelligence capabilities also need to be supported by modern intelligence equipment in carrying out their duties, especially since the development of technology is currently very rapid so that the implementation of intelligence activities can run optimally. Speed is also needed in obtaining information and data for consideration by leaders in making decisions and policies. Hardware and software that is on intelligence equipment tailored to the needs in the implementation of intelligence and security protection systems on intelligence equipment are also needed so that it is not easily detected or leakage of confidential information.

This intelligence capability, synergy and equipment are used by researchers as the influence of intelligence's role in supporting the operation of the Indonesian Navy against all threats and vulnerabilities of violations that occur in the Java sea waters, so as to maintain the stability of the waters of the Indonesian Main Naval Base Surabaya.

### 1.2. Research Objectives.

Results of the formulation of the problem above, this study aims to determine the ability of Intelligence in its duty to support the security and surveillance activities in the Java Sea, especially in waters off East Java, among others, are as follows:

- a. Guidance to increase the capability of Indonesian Navy intelligence personnel in the East Java region through education and training.
- b. Fostering the strength of the intelligence field in the Java sea waters which includes supporting equipment for intelligence work and its facilities and infrastructure so as

to be able to make a significant contribution to the collection of complete and fast data in the field of maritime security.

- c. Synergy between the intelligence community in the region, especially maritime agencies.

### 1.3. Research Benefits.

The results of this study are expected to provide benefits in enhancing the development of intelligence capabilities and intelligence progress in general. This research is also expected to provide benefits both theoretically and practically to support the implementation of intelligence tasks in the field and staff. So that the results of intelligence services can be used as input to the leadership in determining the implementation of marine security operations, especially in East Java waters.

## 2. Research Method.

### 2.1. The method used.

Research conducted by researchers in writing using descriptive qualitative methods, namely using interviews and documentation to informants relating to writing and research with the results of primary and secondary data.

### 2.2. Theories used.

The theory used by researchers in writing this scientific paper.

The first theory, according to Keith Davis, quoted by Mangkunegara, is that capability is a combination of knowledge and skill (knowledge = skill + skill). So the factors that influence one's work ability are the knowledge and skills they possess. Psychologically, abilities consist of potential abilities and reality abilities. A soldier who has the potential ability and the ability of reality, has the ability above average with sufficient knowledge and skills to do everyday work. Therefore, a soldier needs to be placed in a job that suits his expertise. capability theory related to Human Resources or intelligence personnel who have insight, education, physical and mental as well as experience so they are able to carry out tasks and organizations.

The second theory According to Stephen Covey, synergy is the interaction of two or more agents or forces so that their combined effect is greater than the sum of their individual effects. In quotations through development journals, student journals mean synergy is a combination or combination of elements or parts that can produce better and greater output than is done individually, besides that a combination of several elements will produce a superior product. Therefore, synergy in development means the integration of various development elements that can produce better and bigger outputs. Synergy relations conducted by the intelligence community to achieve common goals while still carrying out in their respective fields or expertise.

### 2.3. Data Collection and Processing Techniques.

Qualitative data collection techniques that are carried out by researchers is by interview and documentation. The understanding of the technique in question is :

1. Interview method. Interviews are data collection techniques as well as information extracted from information sources through conversation or question and answer. The purpose of the interview, to uncover data and information from direct sources whose data nature is related to the meanings behind the behavior or social situation that occurs. In this study, researchers will use structured interviews, where the interviewer has compiled a detailed and systematic plan or guideline questions according to a certain pattern using a standard format. However, if the structured interviews carried out have not yet obtained complete data, the researcher will use the free or unstructured interview method but will still be guided by the broad outlines of the issues to be asked.
2. Documentation Method. Data collection techniques with documents are records of events that have already passed. The document study is a complement to the use of observation and interview methods in qualitative research. Research results from observations and interviews will be more credible and trustworthy if supported by documentation from research sources.

After the results of the data collection techniques have been implemented, then data processing is done using Nvivo 12 plus software for making coding of primary and secondary sources of data. Nvivo 12 plus by using coding to form the main categories in the form of Nvivo diagrams so that researchers can specify the results of data that has been coding. After that the results are directly triangulated and produce conclusions

## 3. Results and Discussion.

### 3.1. Data collection.

This study uses qualitative qualitative methods because the problems discussed in this study are not related to numbers, but rather describe, describe, and illustrate the implementation of the importance of intelligence in supporting the operations of the Indonesian Navy's main base in East Java. Data collected in this study are based on primary and secondary data. Primary data were obtained from field research, including interviews and documentation with active personnel in the intelligence field. The data captured, codified and described are sourced from the informants' answers to the questions raised in the interview. Besides that, it is also possible to use memoring to record ideas, thoughts and ideas that will emerge at any time when researchers are in the field. Researchers carry out data collection in the East Java region with the target informant.

### 3.2. Data Processing Techniques Using Nvivo 12 plus Tools.

The results of categorizing or grouping the answer data collected from the study are then displayed descriptively using

Nvivo 12 plus tools. The method used by researchers by sorting starts from the human resources of intelligence personnel and the synergy relationship between the Navy Intelligence and other intelligence in the East Java Navy Base area and the means used to support operational and intelligence activities in carrying out supervision and security in Java sea especially East Java waters.

Researchers use the Nvivo 12 Plus tool to process the results of the data so that a tree model is obtained to determine the variables that are often used in research and then analyzed using the Triangulation method. Triangulation is a data checking technique by comparing data obtained from one source to another. at different times or comparing data obtained from source to other sources with different approaches. This is done to check or compare research data so that the information obtained gets the truth.

Answers to questions that were received by researchers from informants were then included in the Nvivo 12 Plus program, with the topics of capability, synergy and intelligence equipment. then from each answer the informant is processed into the triangulation method and becomes a conclusion. Each answer from the topic that is the scope of the researcher is displayed in the form of a tree chart so that from the tree chart it can be seen the similarity of answers or similarities of the answers of the informants taken as consideration data. So that a conclusion can be drawn from the informants with the results of triangulation as follows :

1. The ability of personnel in the Indonesian main Naval base to better, this is based on having a broad educational background and intelligence and a lot of experience.
2. Synergy with other units has been going well, this can be seen with frequent meetings in communication forums and joint patrols in the maritime field.
3. Intelligence equipment that is used is also increasingly modern in order to support tasks in the field so that information and data obtained can offset the development of the increasingly rapid technological age.

### 3.3. Data Analysis.

The steps taken by researchers to analyze data are as follows :

1. The researcher seeks to observe various objects related to this matter, the informants who are in accordance with the subject of their study, starting from the results of interviews and taking documentation with the informants as well as direct findings when conducting research. The results of these data are recorded and collected as a material, theme, or report framework.
2. After analyzing the state of the research object in the field when conducting research for data collection, then opening the entire data collected and processed into the Nvivo system and the results are triangulated according to the researcher's method, namely descriptive qualitative.

3. Discussing various data that has been collected into codes, or the signs of the various codes, it identifies the identification of categorization themes that have been formed after accumulating data into certain classifications or groupings using the Nvivo 12 plus program.
4. The various data that have been grouped into themes and categorizations become material for deeper analysis. Each theme is described in a particular explanation in the explanation of categorization. All of its descriptions and explanations are juxtaposed by sharing concepts related to certain literatures. The depth of the analysis will thus form the meaning of the writer of the qualitative report on the various data he has examined. This interpretation, through the reference of literary concepts related to the focus of the analysis, will provide validation and scientific reliability.
5. After conducting the analysis, the researcher reexamined what he had found to the supervisor.

If all of that was declared ready and feasible, then the researchers began writing reports on the results of their studies.

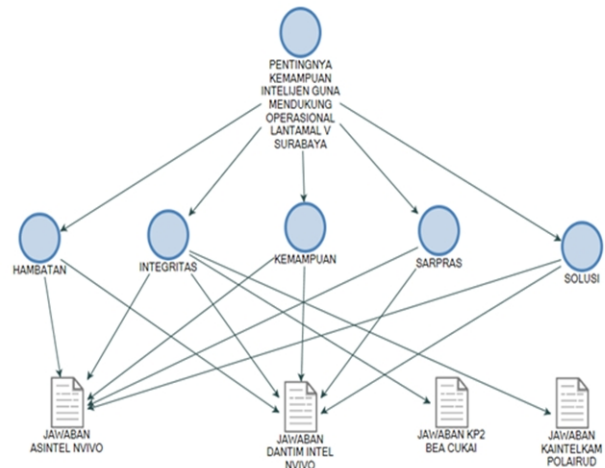
### 3.4. Discussion.

Based on the results of data processing using the Nvivo 12 plus application from the answers of several informants about the ability, synergy and intelligence equipment, it becomes a tree chart that is divided into several categories of answers, namely :

1. Ability  
Professional and quality intelligence is intelligence that has experience in assignments and has basic educational skills and intelligence development that can add insight and knowledge, so as to be able to analyze and complete their tasks to the maximum.
2. Synergy  
The importance of coordinating relations between the intelligence community in the regions is very useful, because it can find out information and situation developments quickly and accurately so that it can be immediately anticipated if there are threats or disruptions that can threaten the stability of regional security.
3. Equipment  
Intelligence personnel at the Navy Base in the East Java Region also need intelligence equipment that follows the development of increasingly rapid and advanced technology, to compensate and facilitate in carrying out their duties.
4. Resistance  
Problems in carrying out intelligence duties of the Navy Base in the East Java Region can be quickly resolved due to the cohesiveness and solidarity between the intelligence community and good relations between superiors and subordinates.
5. The solution  
If there is a problem within the intelligence organization or at the AL Army Base in East Java it can be easily

solved by negotiating with the parties to come up with a solution and to resolve the issue.

Figure 1: Results of a Nvivo 12 plus tree chart.



Source: Authors.

The results of all the answers into one chart that are inter-related with the main category so that it can be known the factors of the problem and the efforts made in accordance with the scope of the researcher. From the results of 5 categories in the form of a tree chart the same results are obtained from the answers of the resource persons, so that the researcher can make the classification of answers and put together into triangulation and from these results the researcher can draw conclusions and suggestions.

## 4. Conclusions and Suggestions.

### 4.1. Conclusions.

Figures, tables and equations are necessary complements to the text of the article, and may even sometimes make up the most important part of it. Necessary it is to follow a protocol to link them with the text clearly and unequivocally.

1. The role of intelligence capabilities plays an important role in supporting the operation of the Navy Base in the East Java Region, with the support of professional and qualified intelligence personnel. Navy AL Base intelligence personnel in the East Java region are active in almost all fields of activity, especially when confronted with the vast area of the Navy Base in the East Java region. For this reason, intelligence products related to marine operations investigation activities need to be maintained and improved, so that the implementation of supervision and security in the Navy Base in East Java can be maximized.
2. The synergy of the intelligence community in the Navy base region in East Java internally in this case between the intelligence forces of the Navy and the lower units has been going well, so that this can be maintained and

enhanced in the face of increasingly high global developments in crime that occurred. Joint patrols at sea, especially in the maritime sector, will also continue to be carried out in order to achieve the goal of synergy and create cohesiveness among the intelligence community at the Indonesian Navy Base in East Java.

3. Intelligence personnel in carrying out their duties not only required the ability of the personnel themselves but the role of intelligence equipment and materials is also very helpful in carrying out the task, so that the results achieved can be maximized.

#### 4.2. Suggestions.

1. Enhancing the capability of intelligence human resources  
The main base of the Navy of Surabaya needs to be improved in view of its vast area, so that intelligence personnel are needed to support the Navy Base in the East Java region. The role of intelligence can run in balance if it has professional intelligence personnel. Increased education and intelligence courses must still be given to the intelligence personnel of the Navy Base in the East Java region, in order to increase intelligence capabilities.
2. Establishing a good relationship between the intelligence community can create an area that is always monitored and updated and monitoring and security in carrying out early detection and prevention can run optimally. In addition to the Forum in the field of Kominda, also the Forum of the Cominda in the field of Maritime. A joint patrol is also needed to protect the waters of the Indonesian Navy base in East Java. This can be created if all agency units equate each other's Vision and Mission for a common goal which is to overcome all threats both from within and from outside that can disrupt security in the territorial waters of the Navy Base in the East Java region.
3. Equipment or special materials used by the Navy's Navy Base in East Java need to keep pace with current technological developments. So that in carrying out intelligence tasks that require special equipment can be carried out well and achieve the expected goals. Along with the modernization of the Indonesian Navy's defense equipment to move towards the Minimum Essential Force (MEF) force, intelligence should also be upgraded to become a world-class Navy intelligence.

#### Conclusions.

1. The role of intelligence capabilities plays an important role in supporting the operation of the Navy Base in the East Java Region, with the support of professional and qualified intelligence personnel. Navy AL Base intelligence personnel in the East Java region are active in almost all fields of activity,

especially when confronted with the vast area of the Navy Base in the East Java region. For this reason, intelligence products related to marine operations investigation activities need to be maintained and improved, so that the implementation of supervision and security in the Navy Base in East Java can be maximized.

2. The synergy of the intelligence community in the Navy base region in East Java internally in this case between the intelligence forces of the Navy and the lower units has been going well, so that this can be maintained and enhanced in the face of increasingly high global developments in crime that occurred. Joint patrols at sea, especially in the maritime sector, will also continue to be carried out in order to achieve the goal of synergy and create cohesiveness among the intelligence community at the Indonesian Navy Base in East Java.

3. Intelligence personnel in carrying out their duties not only required the ability of the personnel themselves but the role of intelligence equipment and materials is also very helpful in carrying out the task, so that the results achieved can be maximized.

#### References.

- Ignasius Soeprapto, (1976). *Kajian Tentang Keamanan Nasional*, Jakarta: Tanpen.
- Arifin Saddoen. (2018) *VISI dan MISI Persamaan dan Perbedaan*, Pengertian, Contoh Fungsi.
- Maulani. (2013). *Dasar-dasar Intelijen*.
- Sukarnaprawira, Kusnia. (2007). *Intelijen Dilema dan Tantangan*. Jakarta.
- Sherman Kent. (1949), in *Strategic Intelligence For American World Policy*, USA : by Princenton, n University Press.
- Alan Dulles, (1962), *Trade Craft of Intelligence; Chapter 3 The Revolution of America Inteligence*. USA: Harper & Row Publishers United State of America.
- Budiman, A. (2011), *Pengelolaan Kerahasiaan Informasi Intelijen Negara*. Jurnal Kajian.
- Bangun, W. (2012). *Manajemen Sumber Daya Manusia*. Jakarta: Penerbit Erlangga.
- George, J.M., dan Jones, G.R. (2012). *Understanding and Managing Organizational Behavior*. New Jersey: Pearson Education.
- Kaelan, M.S., (2010), *Metode Penelitian Agama Kualitatif Interdisipliner*. Yogyakarta:Paradigma.
- Mangkunegara, A.A. Anwar Prabu. (2013). *Manajemen Sumber Daya Manusia Perusahaan*. Bandung: Remaja Rosdakarya.
- Noeng Muhadjir. (1996), *Metodologi Penelitian Kualitatif*, Yogyakarta Rakesarasin
- Covey, Sean. (2006). *The 6 Most Important Decisions You'll Ever Make*, Franklin Covey, Brilliance